



27 ST. HELENS LANE
LEEDS, LS16 8BR

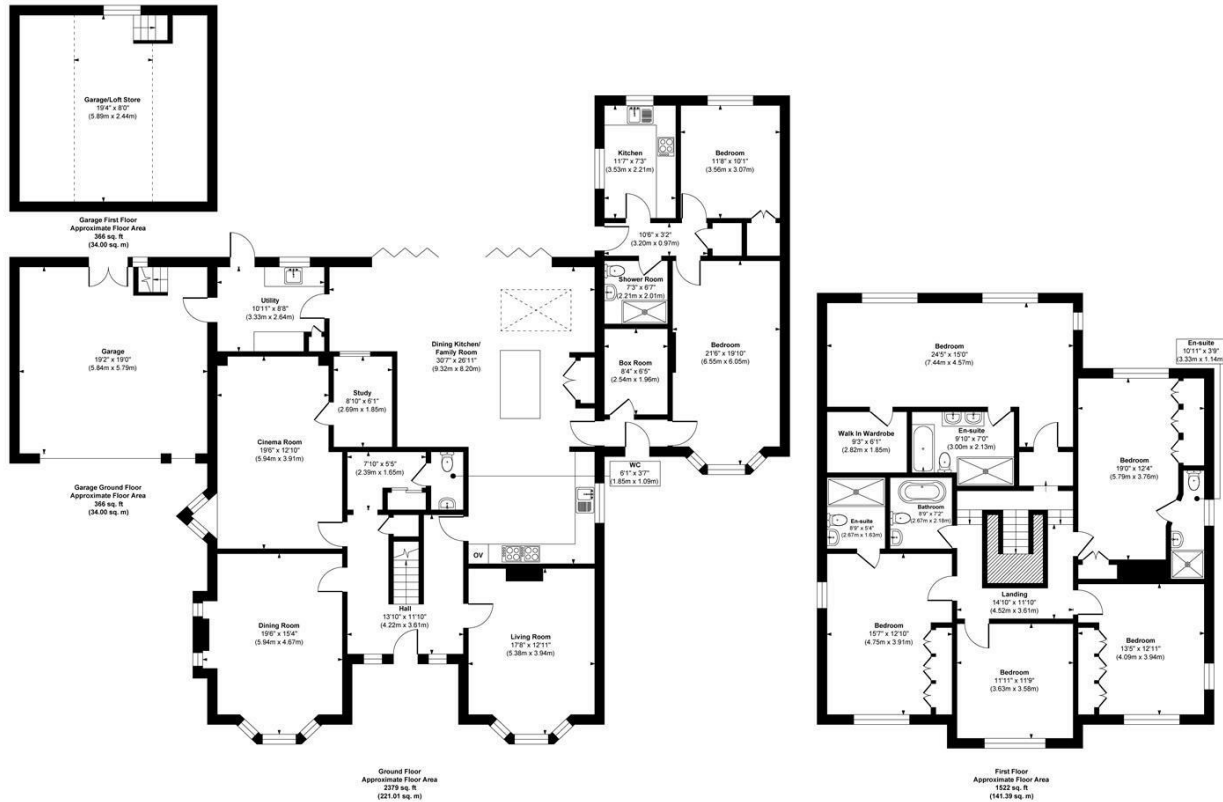
£1,850,000
FREEHOLD

Monroe is thrilled to present this wonderful residence on St. Helens Lane in Adel, this substantial and thoughtfully designed residence offers an exceptional blend of space, versatility, and modern family living.

MONROE

SELLERS OF THE FINEST HOMES

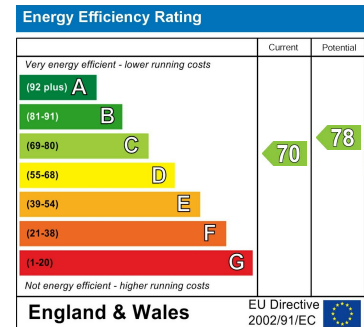
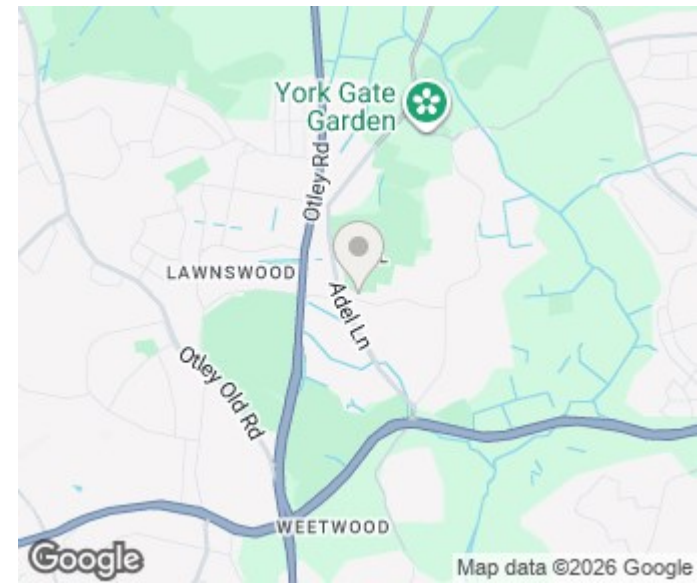
St. Helens Lane, Leeds



Approx. Gross Internal Floor Area 4633 sq. ft / 430.40 sq. m (Including Garage)

Illustration for identification purposes only, measurements are approximate, not to scale.

Copyright © Show Home.



Agents Note: Whilst every care has been taken to prepare these particulars, they are for guidance purposes only. All measurements are approximate and are for general guidance purposes only and whilst every care has been taken to ensure their accuracy, they should not be relied upon and potential buyers/tenants are advised to recheck the measurements

Alwoodley Sales
716 King Lane Alwoodley
Leeds
West Yorkshire
LS17 7BA

0113 870 4443
hello@monroestateagents.com
www.monroestateagents.com

MONROE

SELLERS OF THE FINEST HOMES